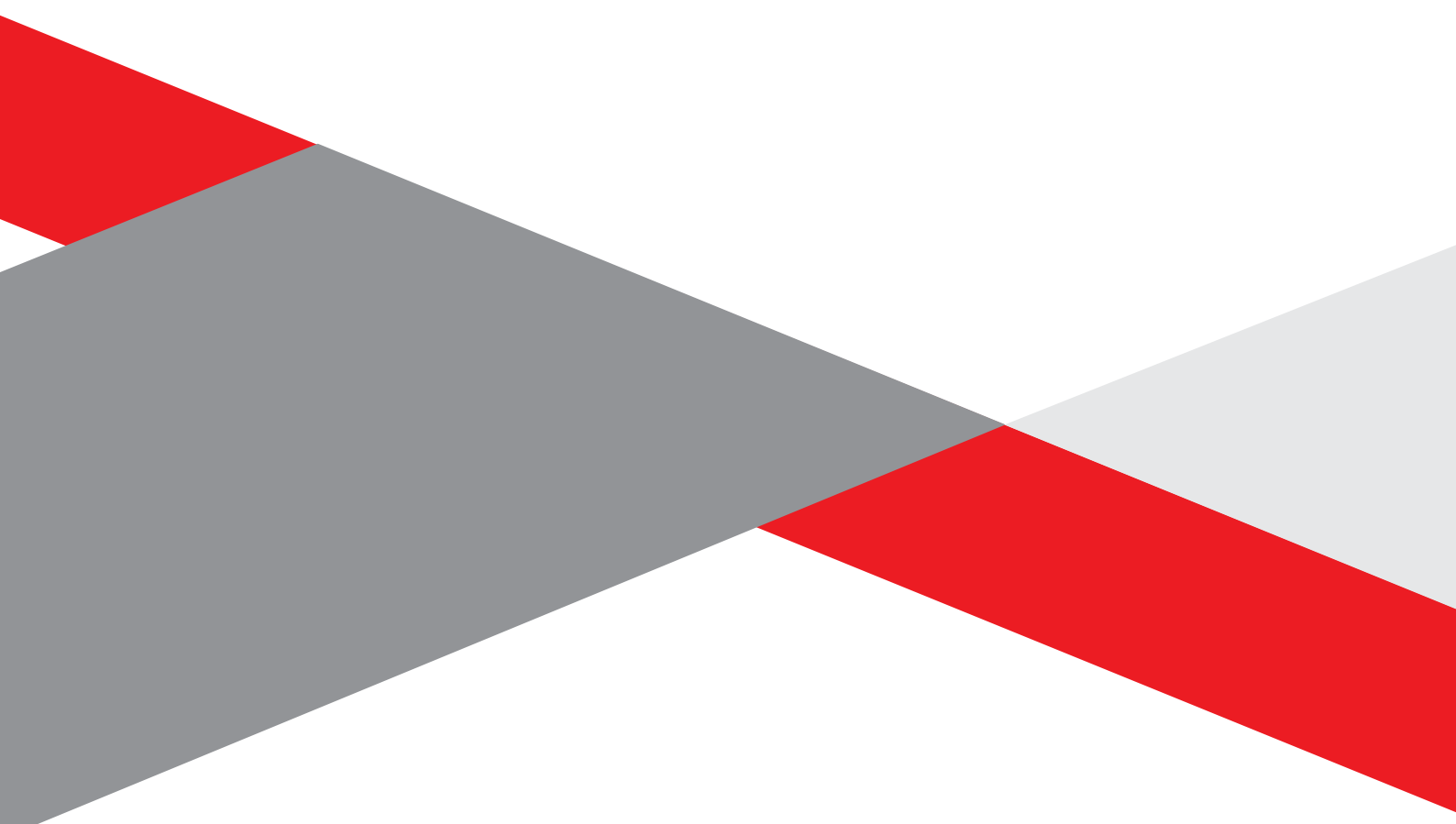


Appendix C7
Meeting Notes



Meeting notes of meetings held during the 30-day review of the EIAr will be included in the Final EIAr

SCOPING PHASE

MUTSHO SOLAR PHOTOVOLTAIC ENERGY FACILITIES AND ASSOCIATED INFRASTRUCTURE, LIMPOPO PROVINCE

**MEETING NOTES OF THE FOCUS GROUP MEETING (FGM)
HELD ON WEDNESDAY, 17 AUGUST 2022 AT 10H30
VENUE: MICROSOFT TEAMS, VIRTUAL MEETING**

Notes for the Record prepared by:

Bregardia Rabbie

Savannah Environmental (Pty) Ltd
E-mail: publicprocess@savannahsa.com

Please address any comments to Savannah Environmental at the above address

MEETING ATTENDEES

Name	Organisation	Position
Hao Tongde	Power China	
Zhang	Power China	
Siphumelele Mqadi	Meadows Energy	Project Developer
Guanyue	Power China	
Ken	Power China	
Wuzhipeng	Power China	
Chen Luxin	Power China	
William Huang	CRI-Eagle Investment Pty Ltd	Project Developer
Anson Esterhuizen	Savannah Environmental	Environmental Assessment Practitioner
Mmakoena Mmola	Savannah Environmental	Environmental Consultant
Nicolene Venter	Savannah Environmental	Public Participation & Social Consultant
Bregardia Rabbie	Savannah Environmental	Public Participation Consultant

WELCOME AND INTRODUCTION

Nicolene Venter welcomed all attendees present at the meeting and asked that all attendees register their attendance on the MS Teams chat function. Nicolene Venter requested for a 15-minute wait to see whether there will be any external stakeholders who will be joining the session. After waiting until 10h45, no participants joined and was it subsequently decided that the meeting be closed

The project presentation was not relayed as no stakeholders attended the virtual Focus Group Meeting (FGM).

APOLOGIES

No apologies were rendered

POST MEETING NOTES

A copy of the virtual participants' attendance register is attached as Appendix A.

WAY FORWARD AND CLOSURE

William Huang reiterated the importance to obtain comments and/or concerns from Local and District Authorities. Nicolene Venter confirmed that she will follow up with Local and District Authorities to obtain their comments and/or concerns regarding the proposed projects.

The meeting was closed at 10h45.

LIST OF ABBREVIATIONS AND ACRONYMS

PV	Photovoltaic
FGM	Focus Group Meeting

MUTSHO SOLAR PHOTOVOLTAIC ENERGY FACILITIES AND ASSOCIATED INFRASTRUCTURE, LIMPOPO PROVINCE

**MEETING NOTES OF THE FOCUS GROUP MEETING (FGM)
HELD WITH ORGANS OF STATE OFFICIALS & COMMENTING AUTHORITIES
ON WEDNESDAY, 17 AUGUST 2022 AT 12H00
VENUE: MICROSOFT TEAMS, VIRTUAL MEETING**

Notes for the Record prepared by:

Bregardia Rabbie

Savannah Environmental (Pty) Ltd
E-mail: publicprocess@savannahsa.com

Please address any comments to Savannah Environmental at the above address

MEETING ATTENDEES

Name	Organisation	Position
Justice Ramagoma	Eskom	Chief Advisor
Hao Tongde	Power China	
William Huang	CRI-Eagle Investment Pty Ltd	Project Developer
Siphumelele Mqadi	Meadows Energy	Project Developer
Tsholofelo Sekonko	Department of Forestry, Fisheries and the Environment (DFFE)	Directorate: Biodiversity Conservation
Marius Meyer	Meadows Energy	
Will Swart	Meadows Energy	
Mmatlala Rabothata	Department of Forestry, Fisheries and the Environment (DFFE)	Directorate: Biodiversity Conservation
Mariette Liefferink	Federation for a Sustainable Environment (FSE)	
Wuzhipeng	Power China	
Anson Esterhuizen	Savannah Environmental	Environmental Assessment Practitioner
Mmakoena Mmola	Savannah Environmental	Environmental Consultant
Nicolene Venter	Savannah Environmental	Public Participation & Social Consultant
Bregardia Rabbie	Savannah Environmental	Public Participation Consultant

APOLOGIES

No apologies were submitted.

The Attendance Record is attached as **Appendix A** to the meeting notes.

PRESENTATION

Nicolene Venter welcomed all attendees and thanked them for their attendance. She requested that all attendees register their attendance on the MS Teams' Chat Function, which will serve as proof of attendance to the Department of Forestry Fisheries and the Environment (DFFE), together with the meeting notes. She also requested that the project team introduce themselves to the stakeholders, after which the stakeholders were requested to introduce themselves to the project team.

Nicolene Venter presented the agenda and purpose of the meeting.

Mmakoena Mmola presented the following:

- brief background to the proposed projects;
- an overview of the Scoping and Environmental Impact Assessment (EIA) process followed;
- a summary of the key environmental findings as documented in the Scoping Reports; and
- a summary of the environmental impacts identified.

A copy of the presentation is attached as **Appendix B** to the meeting notes.

DISCUSSION SESSION

Question / Comment	Response
Mmatlala Rabothata	
It was asked whether the screening tool for the department has been displayed and how the sensitivity of the site looks like in terms of the DFFE screening tool.	Mmakoena Mmola responded that the sensitivity ratings from the screening tool were not included in the presentation, but they have been included in the scoping reports for the four projects. Mmakoena shared her screen to indicate Table 7.5 contained within Chapter 7 of the scoping reports where the results of the screening tool report appear. Mmakoena further explained that in the case of the Agricultural theme the sensitivity was found to be medium, Landscape very high, Archaeology high, Palaeontology very high, Terrestrial Biodiversity very high and that all the sensitivities, as documented in the screening tool report, seem to coincide with the sensitivity ratings as documented in the various specialist reports.
Mmatlala Rabothata had a follow up question: The terrestrial and aquatic assessment sensitivities are shown as being very high. In terms of the mitigation measures, how is it going to be rated afterwards?	Mmakoena Mmola responded that we are currently still in the scoping phase of the EIA process and that all that has been done to date is the scoping of issues. It is only in the EIA phase where the specialists will assess the impacts and propose mitigation measures.
Mmatlala Rabothata noted Mmakoena Mmola's response.	No response was required.

WAY FORWARD AND CLOSURE

- Nicolene Venter confirmed that there were no further questions or comments at that stage and assumed that a lot of written comments on the reports will be received before the closing of the review period on 26 August 2022.
- Mariette Liefferink thanked the team for the presentation and confirmed that they will submit their comments in a written format.

- Mmatlala Rabothata thanked the team for the presentation and confirmed that their comments can be expected before or by the due date.
- Justice Ramagoma was glad that he got the background of the project and said he will still go through the comments and when there are any comments, he will share it with Savannah Environmental in time.
- Nicolene Venter alluded to Justice Ramagoma that his comments will be in connection with the grid connection project which will be assessed as part of a separate Basic Assessment process and therefore comments from Eskom's side will most likely be in connection to the grid application. Nicolene Venter added should Eskom have any comments on the Solar PV projects, they are welcome to submit them.
- Mmakoena Mmola confirmed that Nicolene Venter was correct with the information conveyed to Justice Ramagoma.
- William Huang thanked the stakeholders for joining the meeting and confirmed that they will extend further communication via all the right channels to make sure that everyone is well informed of the progress and the intention of the project. William Huang stated that the project team is open to any kind of communication from the departments and affected parties.
- Mmakoena Mmola thanked everyone for taking the time to attend the meeting.
- Nicolene Venter also thanked the stakeholders for making time available to attend the meeting and appreciation for all the inputs received. Nicolene Venter stated that the Savannah Environmental team is looking forward to the written comments on the report and that all stakeholders will receive a reminder of the review period.

The meeting was closed at 12h45.

LIST OF ABBREVIATIONS AND ACRONYMS

EIA	Environmental Impact Assessment
PV	Photovoltaic
FGM	Focus Group Meeting
DFFE	Department of Forestry, Fisheries and the Environment
FSE	Federation for a Sustainable Environment

APPENDIX A: Attendance Register

Meeting Title	Mutsho Solar Photovoltaic Energy Facilities and Associated Infrastructure – Focus Group Meeting (Scoping Report Presentation)
Attended participants	15
Start time	22/08/17, 11:45:15
End time	22/08/17, 12:46:34
Meeting duration	33m 48s
Name	Role
Nicolene Venter	Organizer
Mmakoena Mmola	Presenter
Ansoné Esterhuizen	Presenter
Bregardia Rabbie	Presenter
William Huang	Attendee
Siphumelele Mqadi	Attendee
Mmakoena Mmola	Attendee
Justice Ramagoma	Attendee
Hao Tongde	Attendee
Tsholofelo Sekonko	Attendee
Mariette Liefferink	Attendee
Wuzhipeng	Attendee
Will Swart	Attendee
Marius Meyer	Attendee

MUTSHO SOLAR PHOTOVOLTAIC (PV) ENERGY FACILITIES AND ASSOCIATED ELECTRICAL GRID INFRASTRUCTURE

LIMPOPO PROVINCE

Focus Group Meeting
Wednesday, 17 August 2022

AGENDA

- Welcome and Introduction
- Meeting Conduct
- Purpose of the Meeting
- Project Overview
- Scoping & Environmental Impact Assessment Process
- Key Environmental Findings
- Way Forward
- Discussions

MEETING CONDUCT

- Recording of the meeting
- Please stay on mute during the presentation
- Register attendance on chat function (name, surname, and affiliation)
- Equal opportunity
- Questions and comments can be submitted on the chat function during the presentation – team will respond after presentation
- Please hold all verbal questions until after the presentation
- Please raise your hand (virtual function) to ask a question and state your name

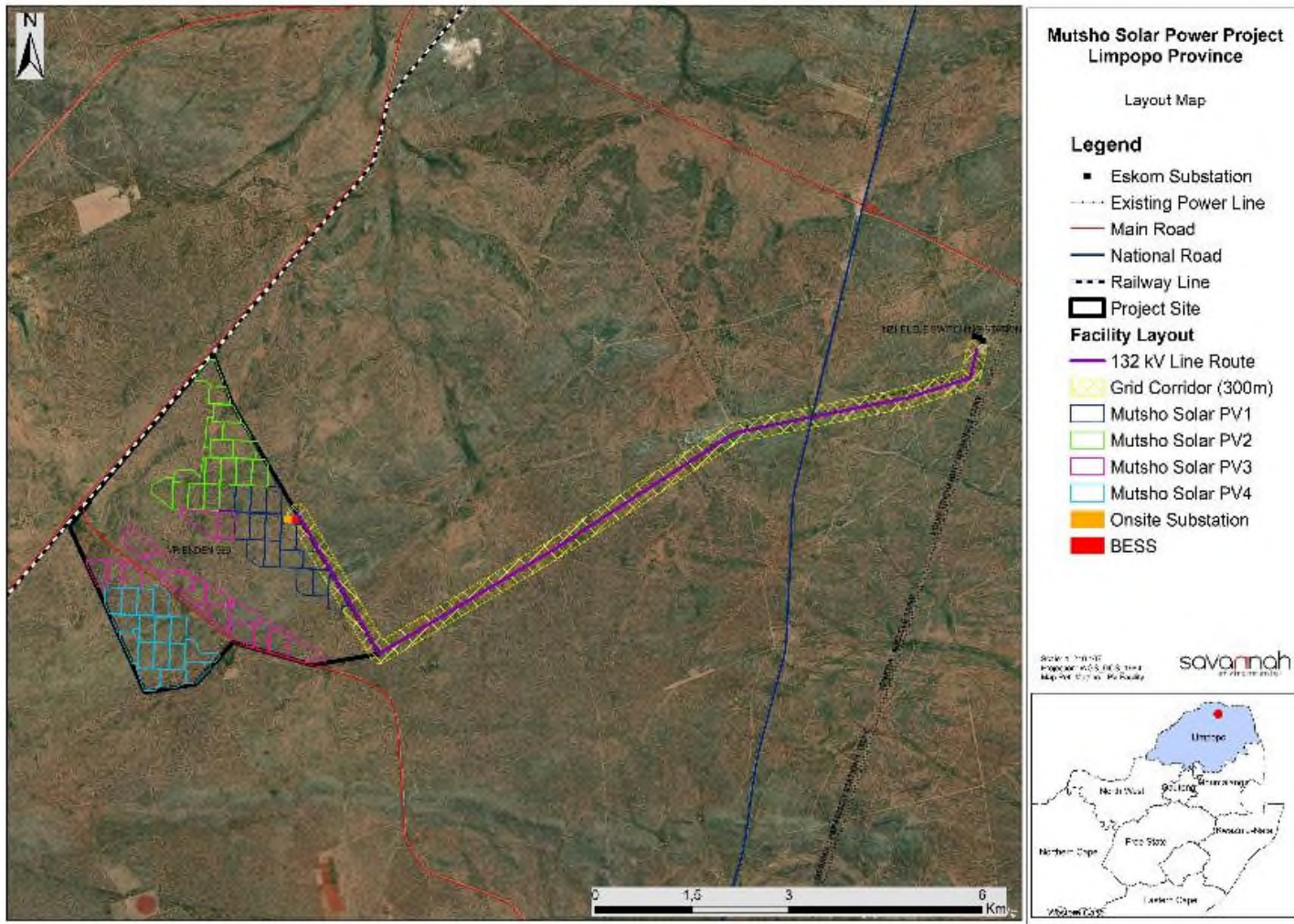
PURPOSE OF THE MEETING

- Provide stakeholders & I&APs with an overview of the **Mutsho Cluster of Solar PV Energy Facilities (separate projects)**
- Summary of the **Scoping & Environmental Impact Assessment (EIA) & Public Participation** being undertaken
- Present a summary of the key environmental findings as documented in the respective **Scoping Reports**
- Provide stakeholders the opportunity to seek clarity regarding the projects and their respective environmental studies, as well as the opportunity to provide valuable input into/to inform the EIA process
- Obtain and record comments for inclusion in the submissions to DFFE

PROJECT OVERVIEW

(Mmakoena Mmola)

COMPONENTS OF THE MUTSHO SOLAR PV CLUSTER



- Contracted capacity: 100MW (each)
- Panels:
 - Up to ~213 250 (each)
 - Panel height up to ~3m (when panel is horizontal)
 - Horizontal single-axis tracking PV technology.
 - Monofacial or bifacial panels are both considered.
 - Central inverters and string inverters are both also considered.
- Grid infrastructure:
 - 33/132kV onsite substation (IPP Portion)
- Other infrastructure:
 - Battery Energy Storage System: 40MW/80MWh (each)
 - Inverters and transformers, cabling between project components, site offices, warehouses, guardhouses, water storage tanks and admin block for human consumption, laydown areas, internal gravel distribution roads

SCOPING & EIA PROCESS & PUBLIC INVOLVEMENT



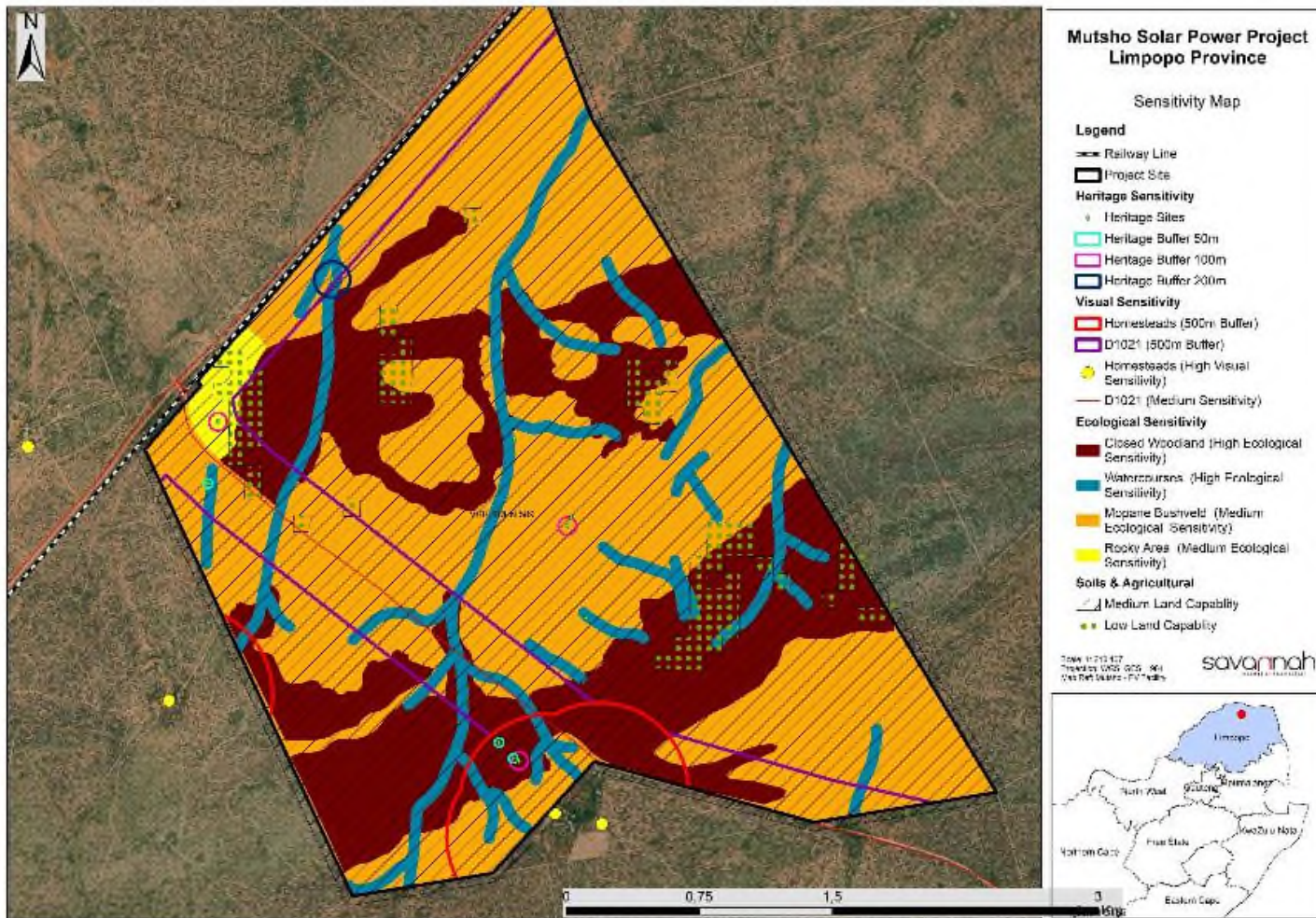
APPROACH TO SCOPING

- Identification of issues – social and biophysical environment
- Potential sensitive areas identified through specialist desktop and in-field studies
- Design of appropriate facility layout to be informed by sensitive areas identified through the EIA process. The facility layout will be presented and considered in the EIA Phase
- A revised Application of the mitigation hierarchy (i.e., avoid, minimise, mitigate and offset)
- Any further micro-siting required to facility layout will be addressed in EIA Phase
- Prepare a Plan of Study for the EIA Phase

SPECIALIST STUDIES

Specialist	Area of Expertise
Lindi Steyn and Andrew Husted of The Biodiversity Company	Ecology (including fauna, flora, avifauna, and wetlands)
Ivan Baker of The Biodiversity Company	Soils and Agricultural Potential
Jenna Lavin of CTS Heritage	Heritage (including archaeology, palaeontology, and cultural landscape)
Jon Marshall of Environmental Planning and Design	Visual
Pierre van Jaarsveld of Urban Econ	Social

ENVIRONMENTAL SENSITIVITIES (all projects)



- Ecological Features:
 - Site falls within the Musina Mopane Bushveld (Least Concern).
 - Site classified as an ESA1.
 - Overlaps with the Vhembe Biosphere Reserve.
 - Areas of high and medium ecological sensitivity were identified.
- Aquatic Features:
 - Areas of high sensitivity are aligned with the watercourses.
 - A 15m buffer has been recommended around these watercourses.
- Avifauna:
 - The project site is 12km from the Soutpansberg IBA.
 - Eleven (11) threatened avifauna species expected to occur.
- Soils and Agricultural Potential:
 - The sensitivity of the project site is predominantly associated with medium land capability sensitivity, with patches of low land capability sensitivity.
- Heritage Features:
 - Project site located on sediments of moderate and zero palaeontological sensitivity. An area of very highly sensitive geology is identified to the north of the project site.
 - 50m and 100m no-go buffers recommended around some heritage structures, deposits, artefacts, buildings and burial grounds/graves.
 - 200m no-go buffer recommended around the Baobab Room.
- Visual:
 - 500m buffer around homesteads.
 - 500m corridor beside roads.

ENVIRONMENTAL IMPACTS IDENTIFIED (all projects)

	Scoping of Issues
Impacts on Ecology (fauna & flora)	<ul style="list-style-type: none"> • Disturbance / degradation / loss to vegetation and habitats. • Disruption of ecological corridors. • Habitat fragmentation. • Encroachment by alien invasive species. • Loss of flora and fauna species of conservation concern or threatened or protected species.
Impacts on Freshwater Features	<ul style="list-style-type: none"> • Disturbance / degradation / loss to wetland soils or vegetation. • Increased erosion and sedimentation, as well as the contamination of surface water resources.
Impacts on Avifauna	<ul style="list-style-type: none"> • Destruction, fragmentation and degradation of habitats. • Displacement of avifauna community (including several species of conservation concern). • Collection of eggs and poaching. • Roadkill. • Collision with PV panels and fences. • Electrocution due to Solar PV connections.
Impacts on Agricultural Potential and Soils	<ul style="list-style-type: none"> • Loss of soil / land capability.

ENVIRONMENTAL IMPACTS IDENTIFIED (all projects)

	Scoping of issues
Impacts on Heritage (cultural landscape, archaeology and Palaeontology)	<ul style="list-style-type: none"> Impact to significant heritage resources through destruction during the development phase and disturbance during the operational phase.
Impacts on Visual Quality	<ul style="list-style-type: none"> Potential change to the rural landscape. Potential visual impacts as experienced by travellers on the adjacent local roads. Potential visual impacts as experienced by travellers on main roads, including the N1 and the R525. Potential visual impacts as experienced by residents and visitors to homesteads in close proximity. Potential visual impacts as experienced by travellers on the train. Potential lighting impacts. Potential impacts associated with glare impacting on roads.
Impacts on the Socio-Economic Environment	<ul style="list-style-type: none"> Increase in business sales/production for the local and regional economy. Increase in country's Gross Domestic Production (GDP) due to capital expenditure during construction and operations. Creation of job opportunities and skills development. Sense of place impacts (visual, noise and dust). Improved energy security. Loss of game farming space.

PLAN OF STUDY FOR THE EIA PHASE

- The Plan of Study for EIA is intended to provide a summary of the key findings of the Scoping Phase and to describe the activities to be undertaken in the EIA Phase of the EIA process.
- **Based on the findings of the Scoping assessment, the following further investigations within the EIA Phase are required:**
 - Ecological Impact Assessment (including flora and fauna)
 - Avifauna Impact Assessment
 - Freshwater Impact Assessment
 - Soils and Agricultural Potential Impact Assessment
 - Heritage Impact Assessment (including archaeology, palaeontology and cultural heritage)
 - Visual Impact Assessment
 - Socio-Economic Impact Assessment

WAY FORWARD AND CLOSURE

(Nicolene Venter)

WAY FORWARD

- Scoping Report review period: **26 July 2022 – 26 August 2022** (can be downloaded from the Savannah Environmental website)
- Final Scoping Report to be submitted to DFFE – August 2022
- EIA & EMPr for review – envisaged November 2022 (TBC)
- Our Public Participation team is available to answer any questions on the development and register you as an I&AP so that you can receive important project information as it becomes available.

WHO TO CONTACT FOR FURTHER INFORMATION

Savannah Environmental (Pty) Ltd

Nicolene Venter

Email: publicprocess@savannahsa.com

PO Box 148, Sunninghill, 2157

Tel: 011 656 3237

Mobile: 060 978 8396 (*including "please call me"*)

Fax: 086 684 0547

www.savannahSA.com

MUTSHO SOLAR PHOTOVOLTAIC ENERGY FACILITIES AND ASSOCIATED INFRASTRUCTURE, LIMPOPO PROVINCE

**MEETING NOTES OF THE FOCUS GROUP MEETING (FGM)
HELD ON WEDNESDAY, 17 AUGUST 2022 AT 13H30
VENUE: MICROSOFT TEAMS, VIRTUAL MEETING**

Notes for the Record prepared by:

Bregardia Rabbie

Savannah Environmental (Pty) Ltd
E-mail: publicprocess@savannahsa.com

Please address any comments to Savannah Environmental at the above address

MEETING ATTENDEES

Name	Organisation	Position
William Huang	CRI-Eagle Investment Pty Ltd	Project Developer
Siphumelele Mqadi	Meadows Energy	Project Developer
Mmakoena Mmola	Savannah Environmental	Environmental Consultant
Nicolene Venter	Savannah Environmental	Public Participation & Social Consultant
Bregardia Rabbie	Savannah Environmental	Public Participation Consultant

WELCOME AND INTRODUCTION

Nicolene Venter welcomed the all attendees present at the meeting and asked that all attendees register their attendance on the MS Teams chat function. Nicolene Venter requested for a 15-minute wait to see whether the landowner (Florence Duval of Fumaria Prop Holdings Pty Ltd) who had sent an RSVP for the session will be joining. After waiting until 10h32, an apology was rendered by the landowner and William Huang confirmed that he will go through the presentation and reports with the landowner later in the week.

The project presentation was not relayed as no stakeholders attended the virtual Focus Group Meeting (FGM).

APOLOGIES

The registered landowner submitted their apologies for not joining the meeting.

The Attendance Record is attached as **Appendix A** to the meeting notes.

POST MEETING NOTES

William Huang will go through the presentation and reports with the landowner.

WAY FORWARD AND CLOSURE

The meeting was closed at 13h45.

LIST OF ABBREVIATIONS AND ACRONYMS

PV	Photovoltaic
FGM	Focus Group Meeting